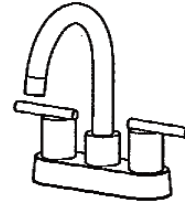


INSTALLATION INSTRUCTIONS

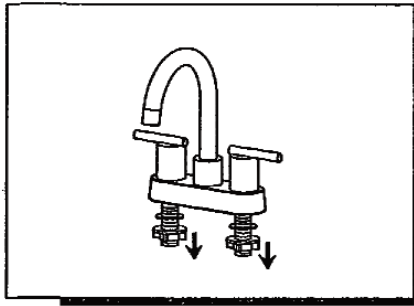
INSTALLATION MANUAL

Tools You Will Need:

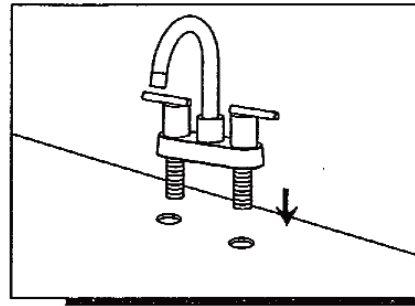


Model No.: LFC202-ML-XX /
WE01010900070322XX

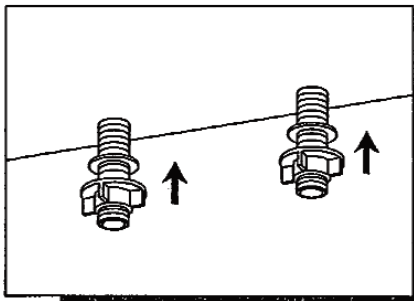
INSTALLATION STEPS:



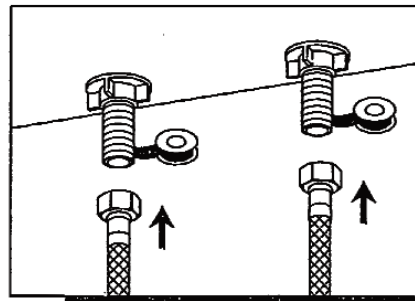
1. Remove the mounting hardware from the faucet.



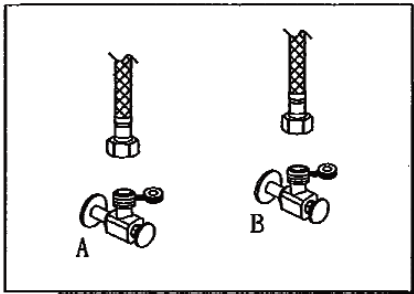
2. Place silicone sealant beneath the plastic gasket and install faucet through center hole.



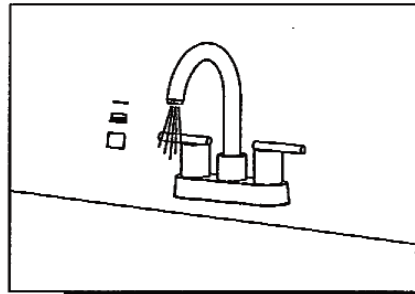
3. Re-assemble the mounting hardware, screw and tighten lock nuts onto faucet.



4. Apply pipe tape to threads. Attach braided hoses one end to the faucet and screw onto inlet ports.



5. Connect to water supply.

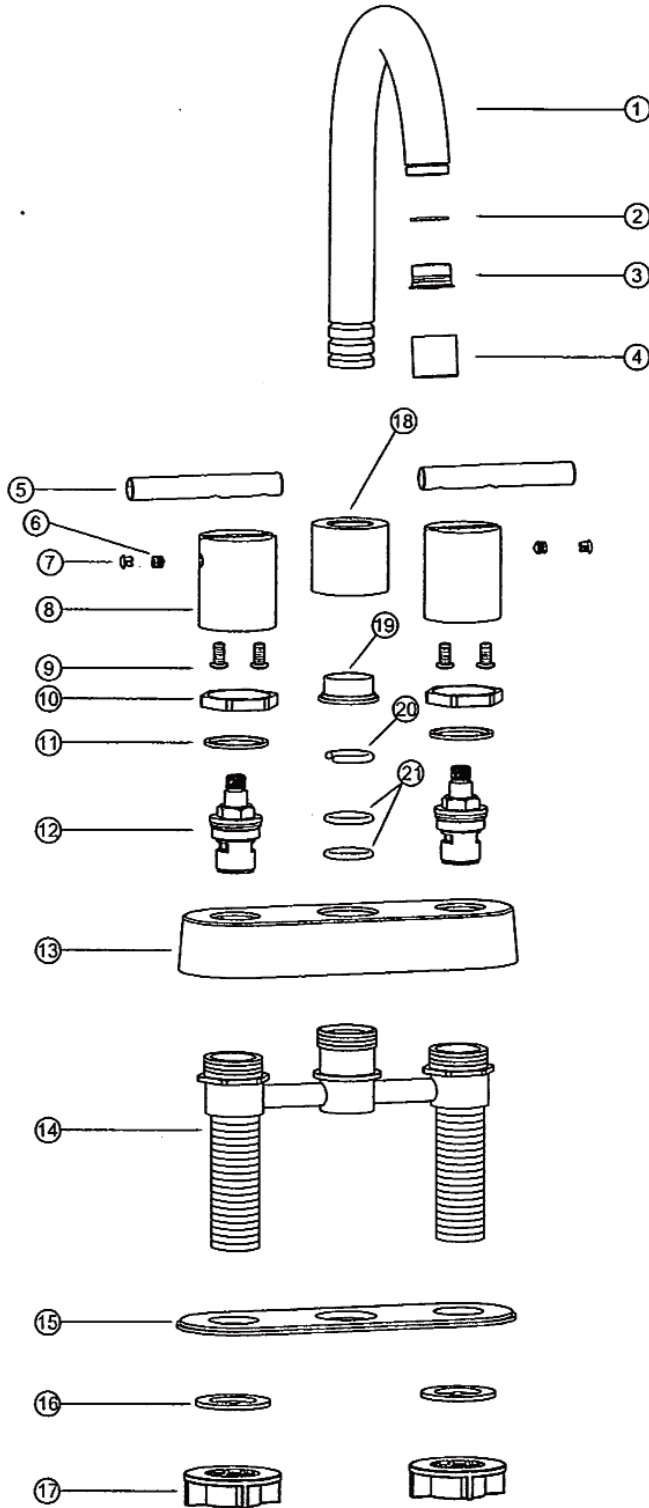


6. After installing faucet, remove aerator assembly and open the hot and cold water supplies. Check for leaks. Turn on faucet handle



Single Handle Lavatory Faucet LFC202

Exploded Drawing



21	O-ring	2
20	Washer	1
19	Washer	1
18	Spout Trim Seat	1
17	Lock Nut	2
16	Rubber Washer	2
15	Plastic Plate	1
14	Inside Waterway	1
13	Escutcheon	1
12	Ceramic Disc Cartridge	2
11	Plastic Washer	2
10	Lock Nut	2
9	Screw	4
8	Canopy	2
7	Button	2
6	Screw	2
5	Handle Lever	2
4	Aerator Cover	1
3	Aerator	1
2	Gasket	1
1	Spout	1